



# GREAT NECK NEWSLETTER

September 29, 2023

## UPCOMING EVENTS & ACTIVITIES

October 2-6	Scholastic Book Fair		
October 5	PTA Back to BBQ	GN Playground	5-6:30pm
October 11	PTA Meeting	GN Library	5:30pm
October 22	Trunk or Treat	GN parking lot	11am-1pm

Get a glimpse of what's going on inside the school by clicking [here](#)

### Note From The Nurse

#### Attention all preschool parents!

As per State regulation, your pre-school child will need to obtain an influenza vaccination by the end of this year.

Proof of vaccination must be handed in to the nurse no later than December 31<sup>st</sup> 2023.

Thank you,

Margaret Goldschneider RN  
Great Neck Elementary School Nurse  
860-442-2593 ext. 3104  
Fax: 860-437-3326



[www.danyshepherdnurse.com](http://www.danyshepherdnurse.com)

### Reminder ~

Children who ride  
their bicycle,  
skateboard or  
scooter to school  
must wear a helmet  
and have  
a note  
from  
home.



## August 2023

Mon	Tue	Wed	Thu	Fri
	1	2	3	4
7	8	9	10	11
14	15	16	17	18
21	22	23	24	25
28	29	FD	31	

(2 day - 2 cumulative)

- 8/28 - ± Staff Convocation
- 8/29 - \* PD - No School - PK-12
- 8/30 - First Day of School

## September 2023

Mon	Tue	Wed	Thu	Fri
				1
SH	5	6	7	8
11	12	13	14	15
18	19	20	21	22
SH	26	27	28	29

(19 days - 21 cumulative)

- 9/4 - School Holiday (Schools Closed)
- 9/25 - School Holiday (Schools Closed)

## October 2023

Mon	Tue	Wed	Thu	Fri
2	3	4	5	6
SH	10	11	12	13
16	17	18	19	20
23	24	25	26	27
30	31			

(21 days - 42 cumulative)

- 10/9 - School Holiday (Schools Closed)

## November 2023

Mon	Tue	Wed	Thu	Fri
		1	2	3
6	PD	8	9	SH
13	14	15	16	17
20	21	School Holiday		
27	28	29	30	

(17 days - 59 cumulative)

- 11/7 - \* PD No School for Students- PK-12
- 11/10 - School Holiday (Schools Closed for Students), P/T Conferences
- 11/22 - 11/24 - School Holiday (Schools Closed)

## December 2023

Mon	Tue	Wed	Thu	Fri
				1
4	5	6	7	8
11	12	13	14	15
18	19	20	21	22
School Holiday				

(16 days - 75 cumulative)

- 12/22 - Early Dismissal PK-12
- 12/25 - 12/29 - School Holiday (Schools Closed)

## January 2024

Mon	Tue	Wed	Thu	Fri
SH	2	3	4	5
8	9	10	11	12
SH	16	17	18	19
22	23	24	25	26
29	30	31		

(21 days - 96 cumulative)

- 1/1 - School Holiday (Schools Closed)
- 1/15 - School Holiday (Schools Closed)
- 1/18-1/23 - \*\* Midterm Exams: Early Dismissal 9-12

## February 2024

Mon	Tue	Wed	Thu	Fri
			1	2
5	6	7	8	9
12	13	14	15	16
SH	21	22	23	
26	27	28	29	

(19 days - 115 cumulative)

- 2/19-2/20 - School Holiday (Schools Closed)

## March 2024

Mon	Tue	Wed	Thu	Fri
				1
4	5	6	PT	8
11	12	13	14	15
18	19	20	21	22
25	26	27	28	SH

(20 days - 135 cumulative)

- \*\* 3/7 - P/T Conferences: Early Dismissal PK-12
- 3/29 - School Holiday (Schools Closed)

## April 2024

Mon	Tue	Wed	Thu	Fri
1	2	3	4	5
School Holiday				
15	16	17	18	19
22	23	24	25	26
29	PD			

(16 days - 151 cumulative)

- 4/8 - 4/12 - School Holiday (Schools Closed)
- 4/30 - \* PD No School for Students - PK-12

## May 2024

Mon	Tue	Wed	Thu	Fri
		1	2	3
6	7	8	9	10
13	14	15	16	17
20	21	22	23	24
SH	28	29	30	31

(22 days - 173 cumulative)

- 5/27 - School Holiday (Schools Closed)

## June 2024

Mon	Tue	Wed	Thu	Fri
3	4	5	6	7
10	11	LD	13	14
17	18	19	20	21
24	25	26	27	28

(8 days - 181 cumulative)

- 6/6 - 6/11 - \*\* Final Exams: Early Dismissal 9-12
- 6/11 - \*\* Early Dismissal PK-12
- 6/12 - Last Day of School Early Dismissal PK-12



**NOTE:** Snow days will be added onto the school year as needed.

BOE Approved: December 8, 2022  
Revised: June 22, 2023



# BREAKFAST

OCTOBER 2023

Milk only: \$.75

WATERFORD SCHOOLS K-12

Second Breakfast Price: \$2.75

"Thoroughly cooking meats, poultry, seafood, shellfish or eggs reduces the risk of foodborne illness"

## Monday

Choice of: Muffin, Cereal  
Or  
Egg & Cheese on a WG Roll  
Fresh fruit Choice  
100% Juice Milk

School Holiday

Choice of: Muffin, Cereal  
Or  
Hardboiled Egg  
Giant goldfish grahams  
Banana 100% juice Milk

Choice of: Muffin, Cereal  
Or  
"Early Riser"  
Egg-hash brown Patty  
Apple slices  
100% Fruit Juice Milk

Choice of: Muffin, Cereal  
Or  
Egg & Cheese on a WG Roll  
Fruit 100% Juice Milk

## Tuesday

Choice of: Muffin, Cereal or  
Pancakes  
Syrup cup  
Diced peaches  
100% Juice Milk

Choice of: Muffin, Cereal  
Or  
Sausage Biscuit  
Applesauce  
100% Fruit juice Milk

Choice of: Muffin, Cereal  
Or  
Banana Bread  
Fresh Fruit Choice  
100% Juice Milk

Choice of: Muffin, Cereal  
Or  
Hardboiled Egg  
Giant goldfish grahams  
Banana 100% juice Milk

Choice of: Muffin, Cereal  
Or  
Pumpkin Bread  
Fresh Fruit Choice  
100% Juice Milk

## Wednesday

Choice of: Muffin, Cereal  
Or  
"Early Riser"  
Egg-hash brown Patty  
Apple slices  
100% Fruit Juice Milk

Choice of: Muffin, Cereal  
Or  
Assorted Yogurt  
Giant Goldfish Apple slices  
100% Juice Milk

Choice of: Muffin, Cereal  
Or  
"Early Riser"  
Egg-hash brown Patty  
Apple slices  
100% Fruit Juice Milk

Choice of: Muffin, Cereal  
Or  
Cheese Omelet Wrap  
Fresh fruit Choice  
100% Juice Milk

## Thursday

Choice of: Muffin, Cereal  
Or  
Sweet potato Roll  
Fruit Cup  
100% Juice Milk

Choice of: Muffin, Cereal  
Or  
Cinnamon French Toast  
Fresh Fruit Choice  
100% Juice Milk

Choice of: Muffin, Cereal  
Or  
Scrambled Eggs  
Fresh Fruit  
100% Fruit Juice Milk

Choice of: Muffin, Cereal  
Or  
Assorted Yogurt  
Giant Goldfish Apple slices  
100% Juice Milk

## Friday

Choice of: Muffin, Cereal  
Or  
Breakfast Pizza  
Fresh fruit Choice  
100% Juice Milk

Choice of: Muffin, Cereal  
Or  
WG Maple Waffle  
Diced peaches  
100% Juice Milk

Choice of: Muffin, Cereal  
Or  
Oatmeal breakfast Round  
Mozzarella string cheese  
Fruit 100% Juice Milk

Choice of: Muffin, Cereal  
Or  
Egg & Cheese on a Roll  
Fresh Fruit Choice  
100% Juice Milk

One FREE breakfast for all students daily.

Please visit [www.myschoolbucks.com](http://www.myschoolbucks.com) to add funds to your child's account.



# LUNCH

OCTOBER 2023

WATERFORD SCHOOLS K-12

LUNCH PRICES

Elementary \$3.25

CLMS \$3.50

WHS \$3.75

Second Meal: \$4.25 - Adult Meal \$5.00

For the 23-24 school year, students qualified for Reduced status will receive one lunch at no cost per day

## Monday

**Meatless Monday!**  
Cheesy Italian pull-a-parts  
Marinara sauce cup  
Broccoli w/ranch cup  
Connecticut Cucumber slices  
Diced peaches  
Milk

School Holiday!

**NATIONAL SCHOOL LUNCH WEEK!**  
Warning/excessive gaming  
can lead to extreme hunger!  
**LEVEL-UP W/LUNCH!**

**Meatless Monday!**  
Mac & Cheese  
Baby Carrots  
Peas Goldfish crackers  
Assorted fresh fruit  
Milk

**Meatless Monday!**  
Pizza bites  
Marinara sauce cup  
Spinach Salad  
Diced peaches Milk

**Meatless Monday!**  
Baked Italian Combo  
Mozzarella stick & Breaded Ravioli  
Caesar Salad  
Bread stick  
Diced pears Milk

## Tuesday

CT Grown for Kids Week!  
Popcorn Chicken/ dipping sauce  
Smile fries  
Locally grown squash  
Dinner roll Applesauce  
Milk

**Level One Pasta & Fire Balls**  
"Penne" with meatballs  
Game Zone Garden salad  
Joy sticks (bread stick)  
Princess peach(es)-diced  
Mario Milk

Hotdog on a WG Roll  
Baked beans  
Sweet potato fries  
Orange smiles  
Milk

Orange chicken  
Brown Rice  
Steamed Broccoli  
Diced carrots  
Mandarin oranges Milk

Bat Shaped Chicken nuggets  
Sweet & sour sauce Cup  
Ghostly Mashed potatoes  
Ghoulish Golden Corn  
Jack o' lantern Roll  
EEK! Sidekick /100% Egg Juice  
Mummy Milk

## Wednesday

**National Taco day!**  
Soft Tacos with Cheese  
Garden Fresh Lettuce & Tomato  
Brown Rice Salsa Cup  
Fiesta Beans  
Farm fresh Pears Milk

**National Smile day!**  
"Angry Birds"  
Chicken Drumsticks  
Game on emoji fries  
Power pellets (corn) Shields (dinner roll)  
Yoshi eggs (grapes)  
Mario Milk

Chicken tenders  
Mashed potatoes & gravy  
Dinner roll green beans  
Peaches or raisins  
Milk

Nachos with Cheese  
Lettuce & Tomato  
Salsa Cup Fiesta Beans  
Pineapple cup  
Corn Bread Milk

## Thursday

Put local on your Tray!  
Chicken & Broccoli Alfredo Pasta  
Ct grown Romaine Salad  
Garlic Knot  
Locally Grown Fresh Fruit Choices  
Milk

**Power Up Pizza Slice**  
Hardcore Baby carrots/ranch  
Saved Game Spinach Salad  
Golden Apple  
Mario Milk

Pancakes  
Syrup cup  
Potato puffs  
Sausage patty  
Cinnamon apple slices  
Mango wango Juice Milk

Chicken & Waffles  
Syrup cup  
Potato puffs  
Cinnamon carrots  
Diced pears Milk

## Friday

CT Grown for Kids Week!  
Pizza square  
Ct Grown Kale Caesar Salad  
Baby carrots/Ranch cup  
Farm Fresh Apple Milk

**Pacman Chicken patty**  
Bonus Baked beans  
Sweet Potato Gems  
Good Game Side kick  
Mario Milk

Cheeseburger  
Oven baked Fries  
Lettuce & tomato  
Cucumber slices  
Fresh Fruit Milk

Turkey & Cheese Grinder  
Cucumber slices/ranch  
WG Doritos Chips  
Dragon Punch/ 100% juice  
Fruit Choice Milk

Please visit [www.myschoolbucks.com](http://www.myschoolbucks.com) to add funds to your child's account.

All grain-based items offered at lunch are whole-grain rich which means that at least 50% of the grains in the item are whole grain (WG), all other grains are enriched  
A VARIETY OF FRESH FRUITS OFFERED DAILY "Thoroughly cooking meats, poultry, seafood, shellfish or eggs reduces the risk of foodborne illness"



# 3RD GRADE DICTIONARY PRESENTATION

On Thursday, September 28th, members of the Waterford Rotary Club distributed dictionaries to all third grade students at Great Neck. Thank you Waterford Rotary!



*Mrs. Dempsey's 3rd grade class.*

*Mrs. Degiacomo's 3rd grade class.*



*Ms. Craddock's 3rd grade class.*





BACK TO SCHOOL  
★ **BBQ** ★



**OCTOBER 5TH**  
**5-6:30 PM**

**WE NEED VOLUNTEERS & DONATIONS**  
**PLEASE SIGN UP HERE:**  
**[HTTPS://TINYURL.COM/GNBBQ2023](https://tinyurl.com/GNBBQ2023)**

**BROUGHT TO YOU BY GREAT NECK PTA**

# PTA NEWS

---



## GREAT NECK SPIRIT WEAR SALE

**OUR GREAT NECK SPIRIT WEAR  
SHOP IS NOW OPEN!!**

**[GREATNECK.SPIRITSALE.COM](https://GREATNECK.SPIRITSALE.COM)**

**SHOP CLOSSES OCTOBER 12TH**

ORDERS WILL BE DELIVERED TO THE SCHOOL APPROXIMATELY 2  
WEEKS AFTER SHOP CLOSSES.

---

## ROOM PARENTS NEEDED

**IF YOU ARE INTERESTED IN BEING A ROOM  
PARENT FOR THE 2023/2024 SCHOOL YEAR  
PLEASE SIGN UP HERE:**

**[TINYURL.COM/GNROOMPARENT2023](https://TINYURL.COM/GNROOMPARENT2023)**

# Addy's Run

## 5k



Join us for the 6th annual Addy's Run to help raise awareness for CLOVES. Adalynn "Addy" is a local Waterford resident born with CLOVES in 2017. Our mission is to educate the community about this rare disease and help those who are affected by it through donation, support and awareness.

Proceeds from this race will be donated to the CLOVES community towards research to help find treatment options for this incurable disease

Contact info: Karen Mackinnel  
[kmack100811@gmail.com](mailto:kmack100811@gmail.com)

**OCTOBER 15**  
**10:00am**

**Wee Run @**  
**9:30am**

**Great Neck**  
**Elementary**  
**School**  
**Waterford, CT**

**REGISTER AT**  
**RUNSIGNUP.COM**  
**OR WITH QR**  
**BELOW**





Every year, 18,000 patients are diagnosed with life-threatening blood cancers or other blood disorders that could be cured or treated with a blood stem cell transplant. But 70% of them don't have a fully matched donor in their family. They depend on Be The Match® to find an unrelated donor. Adapted from [//my.BeTheMatch.org/strongestboy](http://my.BeTheMatch.org/strongestboy)

The Waterford community, including families within our district (see below), have been impacted by these cancers and are looking to raise awareness regarding the Be The Match® program and the need for donors for bone marrow transplants.

Please visit [//my.BeTheMatch.org/StrongestBoy](http://my.BeTheMatch.org/StrongestBoy) for more information on this life saving program and for the process to become a donor.



## YOU COULD BE THE CURE FOR TIAGO

Tiago, Waterford, CT  
searching patient

Join the Be The Match Registry®  
on behalf of Tiago today!

BE  THE MATCH®





**MONTHLY  
VIRTUAL  
TRAINING  
SESSIONS**

**CENTER OF EXCELLENCE  
FOR TEACHING AND LEARNING**



# **PARENT TRAINING INSTITUTE**

## **Sept. 2023 - June 2024**

**PURPOSE:** THE SCSU Parent Training Institute will offer monthly virtual training sessions, and helpful resources on a range of topics that can help parents support their child's academic, social, and emotional development.

- **WHO:** Open to parents of children of all ages.
- **WHERE:** All parent workshops will be held virtually.
- **HOW:** Our online workshops will be recorded for use by registered attendees, including those who are unable to attend live.
- **WHEN:** Starts September 26, 2023. Runs monthly on Tuesdays between 7.00 pm to 8.30 pm.
- **CERTIFICATE:** Every registered attendee will receive a "certificate of completion."
- **COST:** \$100 including full access to 10 live and recorded workshop series.
- For more information, email Dr. Olcay Yavuz at [yavuzo1@southernct.edu](mailto:yavuzo1@southernct.edu)

**REGISTER HERE:** <https://bit.ly/3MMxOzF>

### **PROGRAM DATES/TOPICS:**

#### **2023:**

- September 26 @7pm Understanding the USA Education System: Parents' Rights and Responsibilities  
October 24 @7pm Raising College-Ready Children  
November 21 @7pm Understanding College Funding, FAFSA, Scholarship Opportunities and Loan Types  
December 12 @7pm Helping Your Child Become Career & Job Ready (Resume, Career Branding, Interview)

#### **2024:**

- January 30 @7pm Protecting Your Child from Harassment, Intimidation, and Bullying  
February 27 @7pm Utilizing English Second Language Learner, Special Education, and Student Services  
March 26 @7pm Supporting Your Children's Executive Functioning, 21. Century and Soft Skills  
April 23 @7pm The Roles of Parents to Plan Effective Summer Programs for Children and Youths  
May 28 26 @7pm Raising Socially, Mentally and Emotionally Strong Children  
June 11 @7pm Dealing with Drug Internet Addiction, and Cyberbullying



**Pay for 2023-24  
School Meals and WPS Device Protection  
with Our New Payment System!**

Dear Parents and Guardians,

We've teamed up with MySchoolBucks, an online service where you can easily and securely pay for school meals and WPS Device Protection using a credit/debit card or electronic check.

Using MySchoolBucks you can:

- Add funds to your student's meal account
- View meal balances & cafeteria purchases
- Receive low balance alerts
- Purchase WPS Device Protection for your child's school issued device for the 2023-24 school year

Easily pay online for school meals and WPS Device Protection for students in Grades 4-12! Create your free MySchoolBucks account to conveniently and securely pay online or download the mobile app to make payments from anywhere!

**Get Started Today:**

1. Go to [myschoolbucks.com](https://myschoolbucks.com) or download the mobile app
2. Create your free account and add your students using their school name / student ID
3. Add funds to your student's meal account or add items from the School Store section
4. Check out using your credit / debit card or electronic check *(A program fee may apply)*

Thank you,

WPS Food Services and WPS IT Department



# UCFS Healthcare's School-Based Health Centers and Your School!

The UCFS school-based health centers (SBHC) are a doctor's office inside of your school. The services are provided by an APRN (advanced practice registered nurse)/PA (Physician Assistant) and licensed behavioral health clinician who are experts in adolescent health and are employed by UCFS. The intention of the UCFS SBHC is to supplement the care your child receives at their pediatrician's office.



## Services Provided



- Yearly well-child examinations
- Vaccinations
- Sports physicals
- Acute care visits (e.g. sick visits, lacerations, injuries, etc.)
- Chronic care visits (e.g. asthma, ADHD, etc.)
- Mental Health Assessments
- Substance Abuse Screenings
- Counseling (individual, group, and family)

## Top 5 Reasons to use the School-Based Health Center

- Convenient same day appointment.
- Removes barriers to care such as lack of transportation.
- Decreases time away from the classroom which improves academic success.
- Improves student's achievement by taking care of behavioral health needs that can make learning difficult.
- Connects students and their families with insurance coverage.

5

## Referrals are easy...



- Behavioral Health Referrals can come from students, teachers, counselors, administrators as well as parents/guardians of students.
- Medical visits can be coordinated through the school nurse or directly with our family engagement/medical assistant.
- Working collaboratively with school personnel, families, and local youth services has helped to maximize student support.

## To learn More...

School-Based Health Centers are located at Waterford High School and Clark Lane Middle School and are open to all Waterford Public School students.

Scan here to learn about the School-Based Health Center at your school! SBHC line - 860-822-2803



SCAN ME

# Your child can get a flu shot at the Waterford Public Schools School-Based Health Center



**Protect your child from the flu this season!**

*Your child can receive their flu vaccine with a signed enrollment and flu consent form.*

## Did you know?

The CDC recommends a yearly flu vaccine for everyone 6 months of age and older as the first and most important step in protecting against this serious disease.

## How do I sign my child up for the flu shot?

In order for your child to receive a flu shot, you must fill out an enrollment form and flu vaccine consent form. Enrollment forms can be found on the UCFS Healthcare's website -

<https://www.ucfs.org/services/school-based-health-centers/>

or by scanning the QR code

**Please call the SBHC Line at 860-822-2803 to schedule an appointment.**





Bring the whole family out!



# WATERFORD'S WICKED WONDERLAND

October 29, 2023, 1-4pm

Waterford High School  
Circular Parking Lot

Contact Joe Trelli for questions  
or donations at: 860-444-5848

Sponsored by:



- Children under 12 must be accompanied by an adult at all times
- Bring your own bag to collect candy

**Sign up to be a trunker!**

Decorate your trunk and  
have fun passing out candy

**CONCESSIONS:**



Hot  
Chocolate



Hot Cider



Dessert

**\*Event is FREE to the public!**



Costume Contest



Trunk Contest



Fun Activities



Music by  
DJ A-Bomb



Neurodivergent  
friendly 1-1:30p



Officer Hodges



# **IMPORTANT** **PURCHASE WPS DEVICE** **PROTECTION BY OCT. 15TH!** **Grades 4-12 Only**

Using MySchoolBucks you can:

- Purchase Device Protection in our WPS online store
- Pay invoices (new charger, etc.)







Get started in 4 easy steps:

1. Download the MySchoolBucksmobile app or visit [myschoolbucks.com](https://myschoolbucks.com)
2. Create your free account
3. Add your student
4. Browse the WPS online store to locate WPS Device Protection



Store

The district is only offering this until Oct. 15th, so don't miss out on this opportunity. After that date, families will not be able to purchase this protection for the 23-24 school year and will be responsible for the full cost of repair on your child's school issued device.

Repair Cost <u>With</u> Device Protection	Repair Cost <u>Without</u> Device Protection
 = \$0	 = \$75
 = \$0	 = \$40
 = \$0	 = \$350





# 2023-2024

# WATERFORD RECREATIONAL BASKETBALL SEASON

**REGISTER ONLINE NOW!**  
**WATERFORDRECBASKETBALL.COM**



## LEAGUE BREAKDOWN

### INSTRUCTIONAL LEAGUE

**BOYS & GIRLS GRADE 1-3**

**INSTRUCTIONAL REGISTRATION FEE - \$50**

### RECREATIONAL LEAGUES

**BOYS GRADE 3/4/5 - GIRLS GRADE 3/4/5**

**BOYS GRADE 6/7/8 - GIRLS GRADE 6/7/8**

**BOYS SENIOR LEAGUE GRADE 9-12**

### TRAVEL LEAGUES

**BOYS & GIRLS 4-8**

*\* TRYOUT & EVALUATION TIMES WILL BE RELEASED SHORTLY*

## RECREATIONAL REGISTRATION FEES

**1ST CHILD: \$100**

**2ND CHILD: \$80**

**EACH ADDITIONAL CHILD: \$65**

**FAMILY MAXIMUM: \$245**

**\*\*REGISTER EARLY TO  
AVOID LATE FEES**

## REGISTRATION DEADLINES

**TRAVEL REGISTRATION CLOSES OCT  
16TH**

**RECREATIONAL CLOSES NOV 12TH  
\$20 LATE FEE AFTER OCT 16TH**

**\*TRAVEL MUST BE REGISTERED IN THE  
REC PROGRAM BY 10/16/23**

**ANY QUESTIONS, PLEASE  
REACH OUT TO:**

**WATERFORDBBALLBOARD  
@GMAIL.COM**



**WATERFORD**  
RECREATIONAL  
BASKETBALL

*CONNECT WITH US*





# A CELEBRATION OF HISPANIC HERITAGE MONTH

**Saturday, September 30th**

**At The Waterford Public Library**

**2:30 to 4:30 pm**

**Free and open to the public.**

Una celebración del Mes de la Herencia Hispana  
Sábado 30 de septiembre 14:30 a 16:30  
en la biblioteca pública de Waterford  
¡Gratis y abierto al publico!

860-444-5805  
49 Rope Ferry Road  
Waterford, CT  
[www.waterfordpubliclibrary.org](http://www.waterfordpubliclibrary.org)



Co-sponsored by Mujeres Entre Cultura ("Women Between Cultures") and Esperanza Latina.



VENDORS NEEDED

# ARTISAN & VENDOR FAIR

WATERFORD HIGH SCHOOL  
WATERFORD, CT

PROFITS SUPPORT THE CLASS OF 2025

DEC  
3rd

APPLY  
HERE



10-3pm

[HTTPS://FORMS.GLE/  
3LNFRN1NNA75JXSUA](https://forms.gle/3LNFRN1NNA75JXSUA)



# Urgent response for children's mental health crises.



- Thoughts of suicide or self-injury
- Feelings of depression, anxiety or hopelessness
- Out-of-control behaviors
- Substance misuse
- Any mental health crisis

**No appointment needed**

At the four walk-in **Urgent Crisis Centers (UCC)** for children and adolescents ages 18 and under, trained staff will:

- ✓ De-escalate the crisis
- ✓ Complete an evaluation
- ✓ Connect youth to services

## Urgent Crisis Centers



1680 Albany Avenue, Hartford, CT 06105  
(860) 297-0520  
[thevillage.org/UCC](http://thevillage.org/UCC)



255 Hempstead St, New London, CT 06320  
(860) 437-4550  
[childandfamilyagency.org/urgent-crisis-center](http://childandfamilyagency.org/urgent-crisis-center)



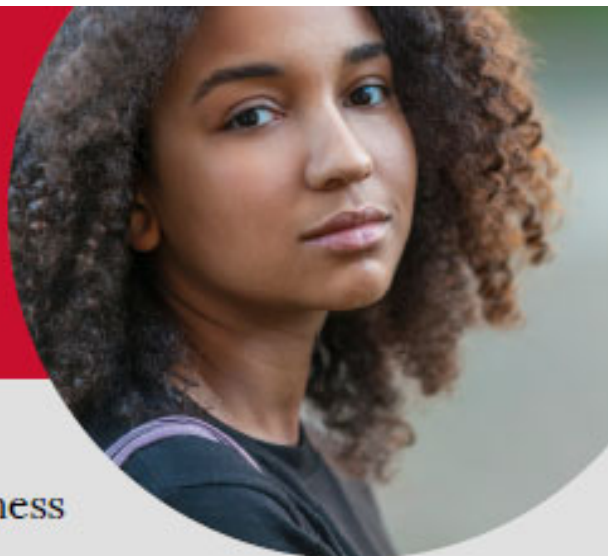
141 East Main Street, Waterbury, CT 06702  
(203) 580-4298  
[wellmore.org/urgent-crisis-center](http://wellmore.org/urgent-crisis-center)



20 York Street, New Haven, CT 06510  
(203) 688-4707  
[ynhh.org/childrens-hospital/services/emergency-services](http://ynhh.org/childrens-hospital/services/emergency-services)



# Urgent response for children's mental health crises.



- Thoughts of suicide or self-injury
- Feelings of depression, anxiety or hopelessness
- Out-of-control behaviors
- Substance misuse
- Any mental health crisis

**No appointment needed**

At the four walk-in **Urgent Crisis Centers (UCC)** for children and adolescents ages 18 and under, trained staff will:

- ✓ De-escalate the crisis
- ✓ Complete an evaluation
- ✓ Connect youth to services

## Urgent Crisis Centers



1680 Albany Avenue, Hartford, CT 06105  
(860) 297-0520  
[thevillage.org/UCC](http://thevillage.org/UCC)



255 Hempstead St, New London, CT 06320  
(860) 437-4550  
[childandfamilyagency.org/urgent-crisis-center](http://childandfamilyagency.org/urgent-crisis-center)



141 East Main Street, Waterbury, CT 06702  
(203) 580-4298  
[wellmore.org/urgent-crisis-center](http://wellmore.org/urgent-crisis-center)



20 York Street, New Haven, CT 06510  
(203) 688-4707  
[ynhh.org/childrens-hospital/services/emergency-services](http://ynhh.org/childrens-hospital/services/emergency-services)

In partnership with:



*If a youth needs immediate medical attention,  
call 9-1-1 or go to the nearest hospital.*